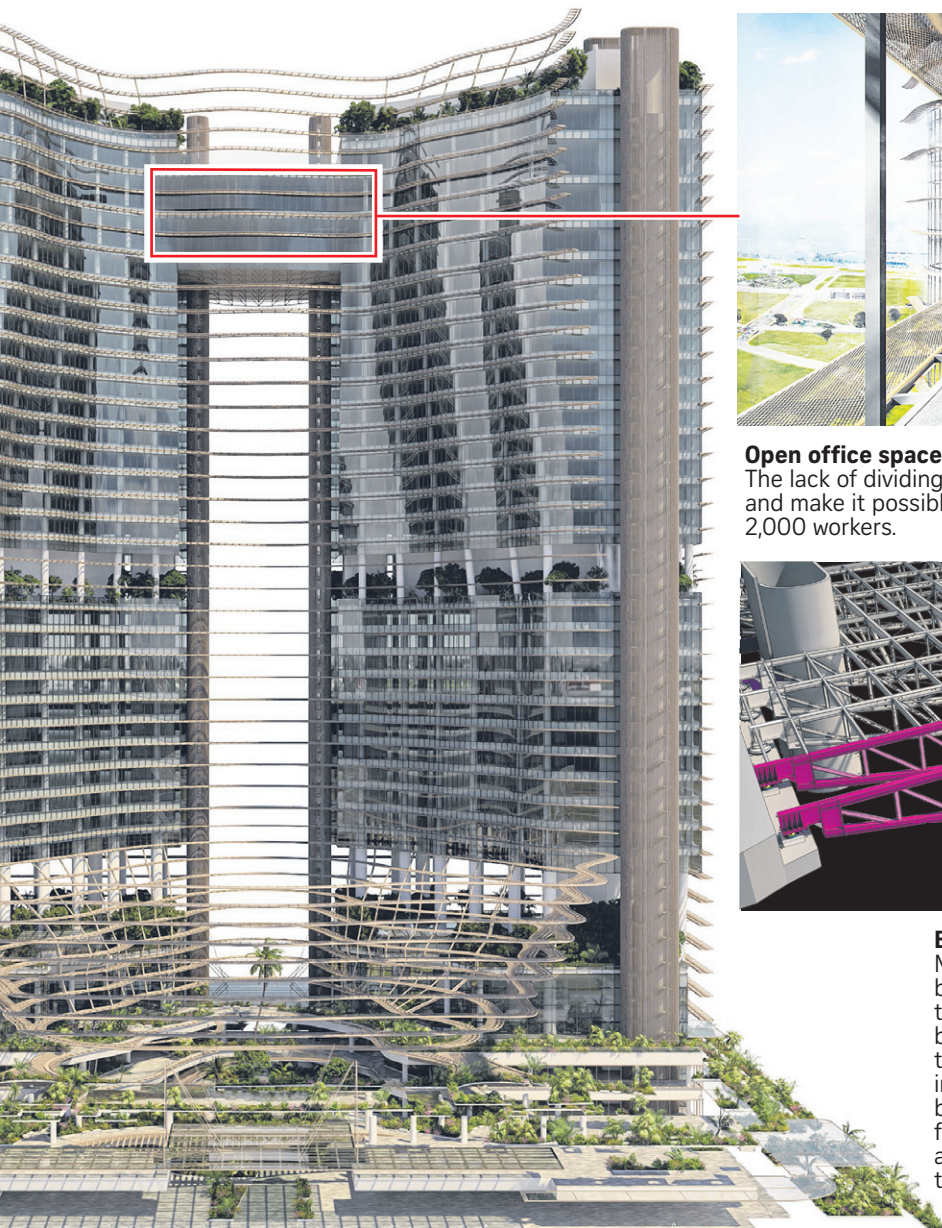


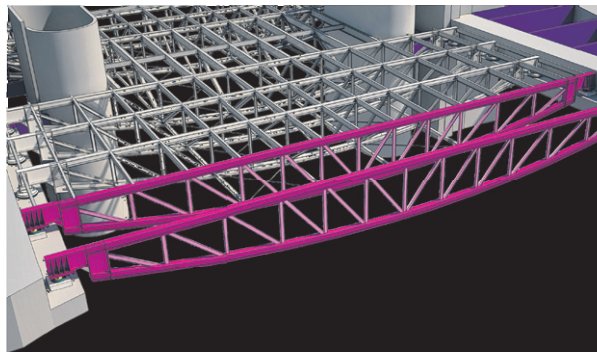
# Open office

The new Marina One development features two massive office floors without dividing walls, allowing a clear view across their 170m span. Linking both office towers, these special floors rest upon giant steel trusses which safely bear their weight.



## Open office space

The lack of dividing walls gives office tenants more flexibility in using the space, and make it possible to have a massive open-plan office. Each floor can host up to 2,000 workers.



## Steel supports

Prefabricated steel trusses are assembled on-site at the base of the office towers, before being slowly hoisted upwards over several days. Each truss is 45m long, 46m wide and 4m high. Together, they link the 45,000 sq ft floors in each tower, forming a total floor plate of 100,000 sq ft.

## Bearing the load

Marina One is the first Grade-A office building here to use special bearing technology, usually found only in bridges and highways. The steel trusses rest upon special surfaces installed at each tower. Movable bearings allow the trusses to slide from side to side. This distributes and reduces the stress, allowing the trusses to bear a greater load.

