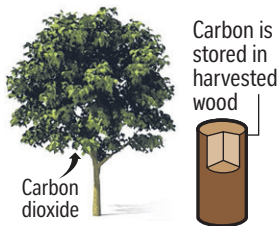


Building with mass engineered timber

Using mass engineered timber in construction projects saves up to 35 per cent in manpower on site and reduces construction time.

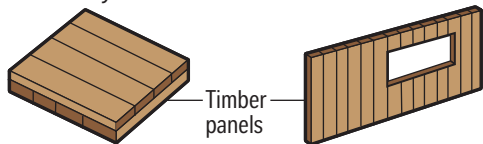
1 Harvest

Wood is harvested from sustainably managed forests. New trees are planted to replace harvested trees.



2 Fabrication

Layers of timber panels are glued together for strength and structural stability. Then they are cut to exact dimensions.



3 Assembly

The cut timber components are delivered to the site and assembled.

