

5 years of Gardens by the Bay

Visitor numbers are growing:



1 million by Aug 2012



5 million by 2013



10 million by 2014

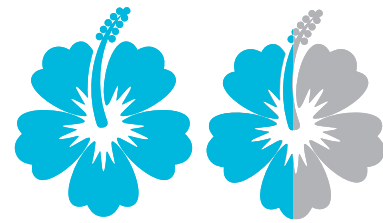


20 million by 2015



30 million by 2016

Opened in **June 2012**



More than **158,000** plants on the Supertrees



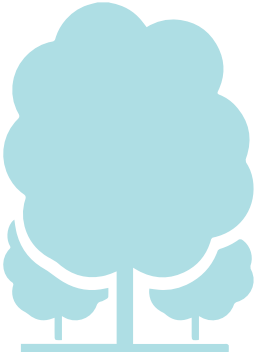
1.5 million plants from over **5,000** species from all over the world

The flower field in the Flower Dome has put up

35 floral displays

showcasing **tulips, cherry blossoms, fruits and vegetables.**

More than **28,000** plants from regions with a **Mediterranean** type climate in the **Flower Dome**



More than **72,000** plants from the tropical montane regions **1,500-3,000m** above sea level in the Cloud Forest

More than **1,000** events

have taken place in the Gardens.



20 editions of the popular nightly Garden Rhapsody light and sound show have entertained visitors.

