

Iran nuclear deal

MAJOR FACILITIES (Approximate locations)



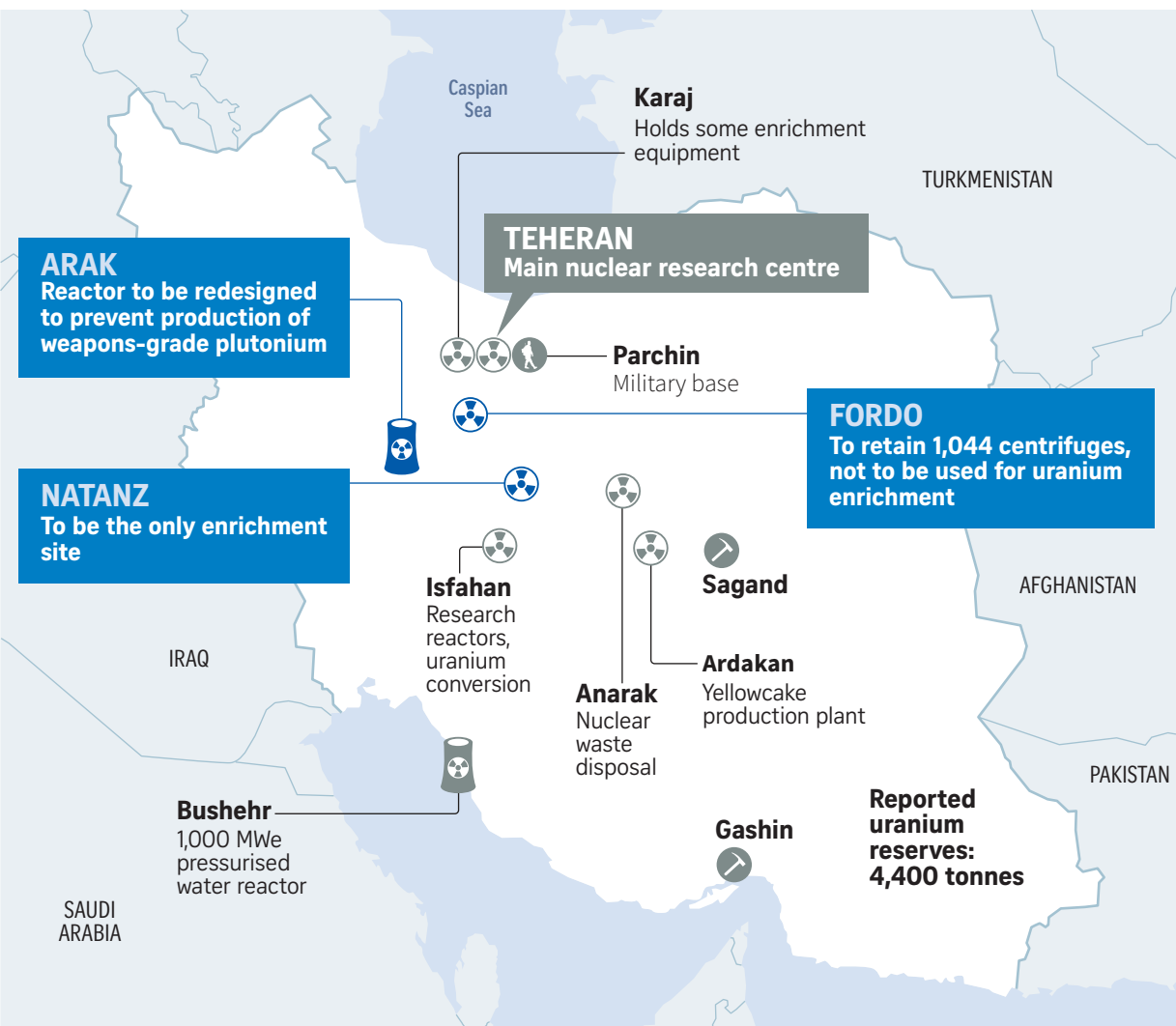
Nuclear site



Reactor



Uranium mine



- Closer inspections, under the Additional Protocol, including potentially of military bases
- IAEA surveillance equipment to be installed in mines and nuclear facilities

ENRICHMENT

The uranium enrichment process increases the proportion of U235, needed for energy production, by separating it from U238



Civil use: The proportion of U235 is increased 4%-5% to produce fuel for power stations



Military use: Uranium is enriched to at least 90% of U235 to produce nuclear weapons

UNDER THE DEAL

- Slash the number of uranium centrifuges from about 19,000 to 5,060 for 10 years
- Stockpile of low-enriched uranium to be reduced from 10,000kg to 300kg for 15 years