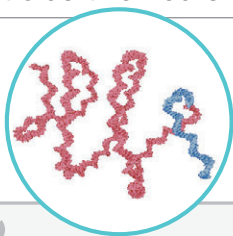


Improving sensitivity

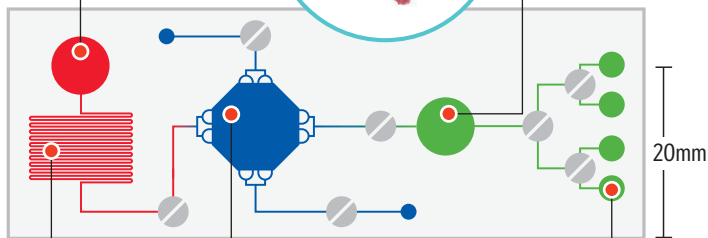
National University of Singapore researchers have developed a technology that uses programmable DNA barcodes to measure protein markers in a patient's cells in as little as two hours.

Sample loading

Only 50 μ L of cell sample needs to be loaded on the chip

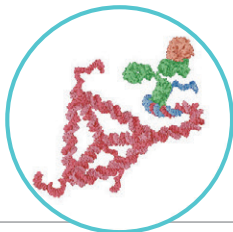


Unfolding of 3D DNA barcodes



Mixing channel

Generation of 3D DNA barcodes



Analysis

- Analysis of the barcodes reflects the amount and location of billions of protein markers in a single test
- Over a million times more sensitive than conventional tissue analysis techniques.
- Over 94 per cent diagnostic accuracy