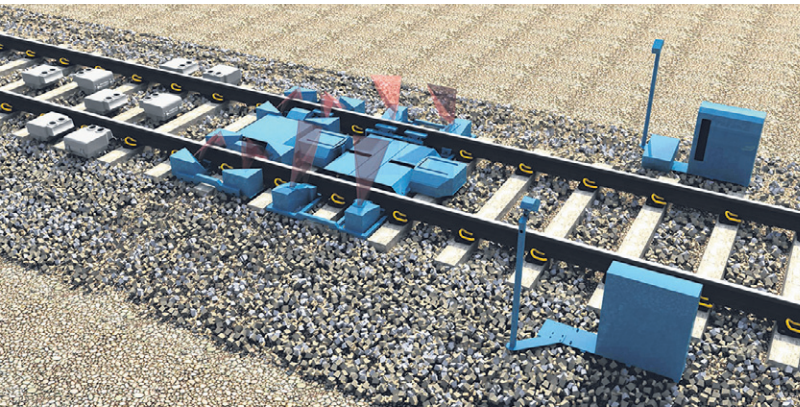


High-tech depot

Transport Minister Khaw Boon Wan has announced that the first stage of the Thomson-East Coast Line will commence service in late January next year. The line's 32ha Mandai Depot can stable 90 four-car trains, with workshops capable of servicing 11 trains concurrently. Here are some of the depot's features:



AUTOMATIC VEHICLE INSPECTION

- This system constantly measures key operating functions to detect anomalies so that faults can be addressed before they worsen. Components such as power collector shoes (which draw power for the train), brakes and wheels are monitored to ensure they are all in good working condition.

Thomson-East Coast Line

Three stations (Woodlands North, Woodlands and Woodlands South) will open in late January next year, before Chinese New Year.



INTEGRATED BUS DEPOT

- Mandai Depot, the first bus-train depot here, will provide parking and maintenance facilities for at least 550 buses.

SMART GLASSES

- These futuristic hands-free communication devices with a camera, microphone and speaker allow the operations control centre (OCC) to guide maintenance crews as they tackle incidents. The OCC staff can see what the front-line crew sees, allowing them to give instant feedback and instructions.



SOLAR PANELS

- There are 6,190 panels generating up to 1,940MWh of electricity a year – equivalent to what 430 four-room flats consume.

