

**THE ROLE OF TREES**

Tree canopies reflect and absorb solar radiation.

Trees serve as natural air filters, providing us with clean air.

Tree canopies cool our surface and ambient temperatures

**RESILIENCE**

Tiered planting structures where trees and shrubs are closely planted enable the trees to have intertwined roots and improved resilience against wind and rain.

**REGULATE WATER CYCLE** Healthy forests also play a role in regulating water cycle, slowing down floodwaters and cleaning the water that flows into our waterways.

# Greening the red dot

NParks plans to plant a million trees in 10 years starting this year. How will this impact Singapore?

What **1,000,000** trees mean

Able to provide canopy cover sheltering a land area equivalent to about

**5**

**Toa Payoh** towns

One million trees include those planted along our streetscapes to create **nature ways...**

The greening of **industrial estates...**

Enhancement planting in our **nature reserves, gardens...**

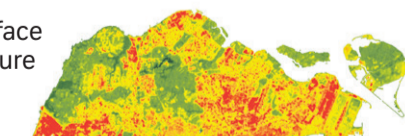
**Parks and park connectors.**

Planting of additional trees in a tiered, forest-like planting structure can **reduce land surface temperatures** by up to

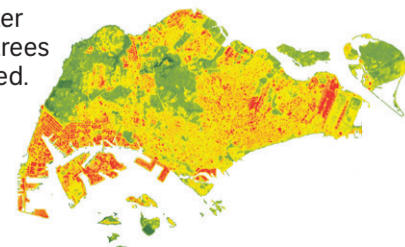
**6°C**

**Urban Heat Island maps**

**BEFORE:** Land surface temperature map in 2018.



**AFTER:** A projection of land surface temperatures across the island after 1 million trees are planted.



NParks aims to have

**300km**

of nature ways by 2030. This is about the distance from Johor Baru to Kuala Lumpur.



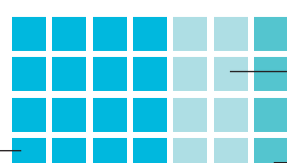
**BY THE NUMBERS**

Total number of trees in Singapore

**7m**

Number of trees in nature reserves and nature areas managed by NParks

**4m**



Number of urban trees along our streets, in parks and on state lands

**2m**

An estimated

**1m**

trees are managed by town councils

Number of trees planted by NParks annually

**50,000**