

Covid-19 cleans the air but not for all

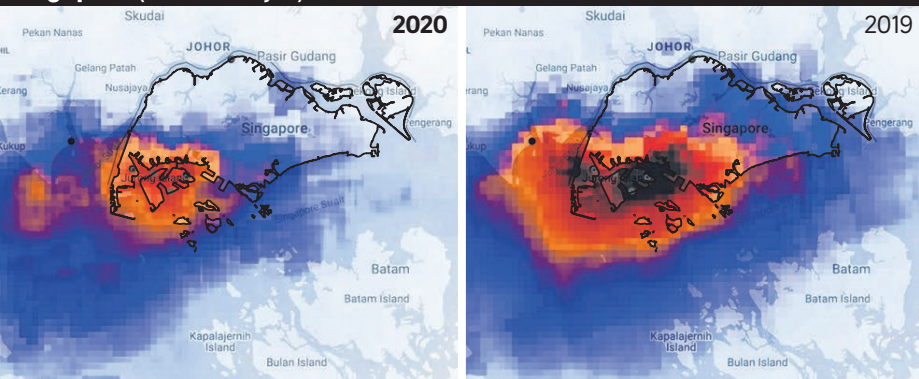
Satellite analysis of nitrogen dioxide (NO₂) emissions during recent lockdowns and movement restrictions shows drops in the pollutant, which is produced from burning fossil fuels. Long-term exposure to NO₂ leads to inflammation of the airways, which can worsen symptoms of asthma and other respiratory diseases. The left panel for each city shows improved air quality in recent weeks versus the same period last year on the right. But in some cities, PM2.5 readings remained largely the same.

Amount of nitrogen dioxide

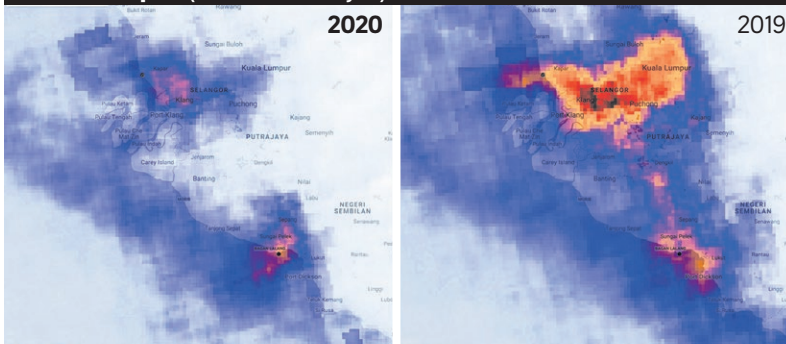


NOTE: The measurement used in the images is micromol per sq m. The darker the colour, the worse the air pollution.

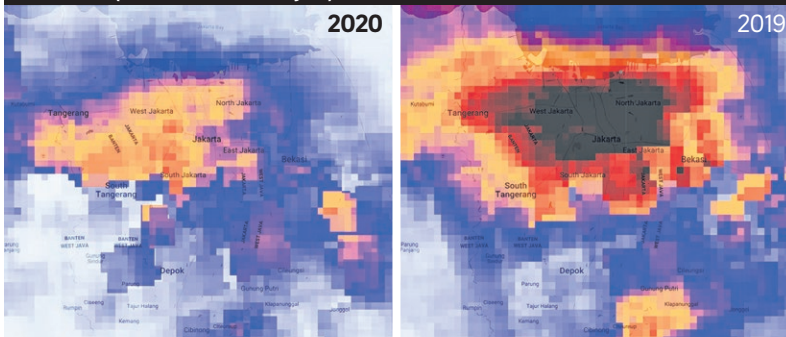
Singapore (Feb 10-May 5)



Kuala Lumpur (March 18-May 5)



Jakarta (March 12 to May 5)



Manila (March 15-May 5)

