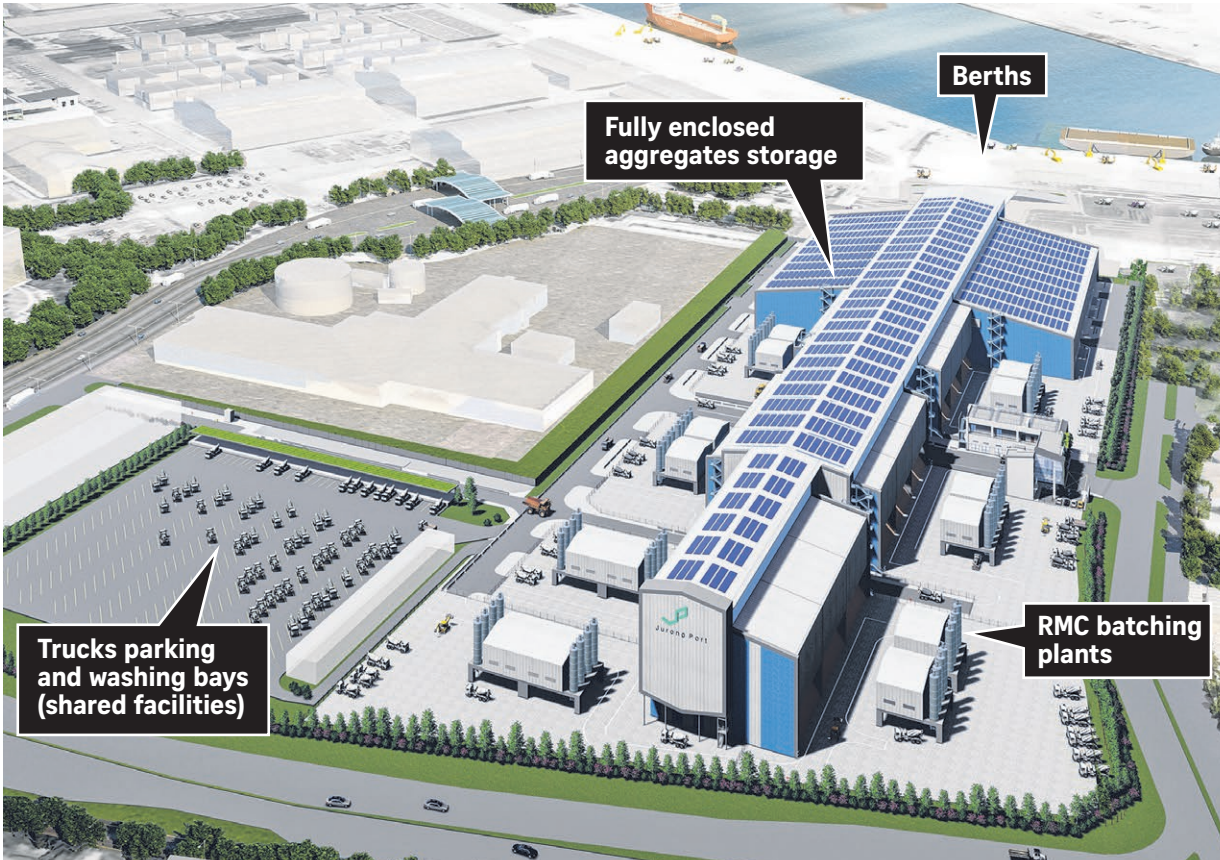


Ready-mixed concrete port-centric ecosystem

The co-location of aggregates, cement and steel handling will enable shorter, leaner and greener supply chains for construction materials in Singapore.



BY THE NUMBERS



6m tonnes*

Discharge of aggregates (sand and gravel) from vessels at JP's berths



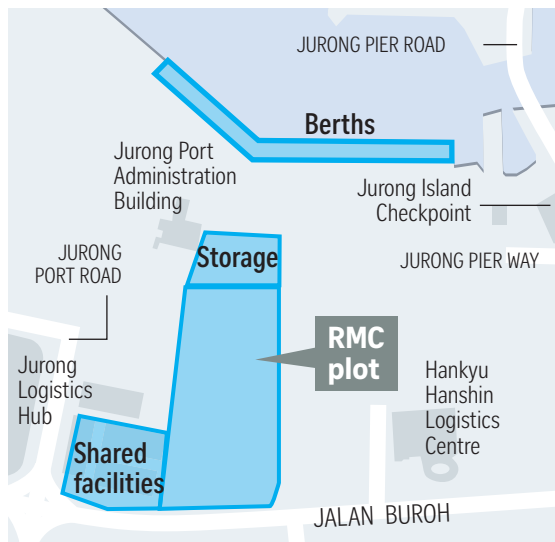
Reduction of more than
600,000
truck trips annually



Costs
\$200m
to develop



Solar photovoltaic panels are capable of generating
3 to 4 megawatt peak
of power



*Annually

Source: JURONG PORT PHOTO: JURONG PORT STRAITS TIMES GRAPHICS