

# Secrets of the human body discovered

The identification of the new glands can be important for patients with head-neck cancer as the finding may allow doctors to avoid these glands during radiotherapy to better maintain quality of life after treatment.

## SALIVARY GLANDS

Salivary glands secrete **0.5 to 1.5 litres** of saliva each day

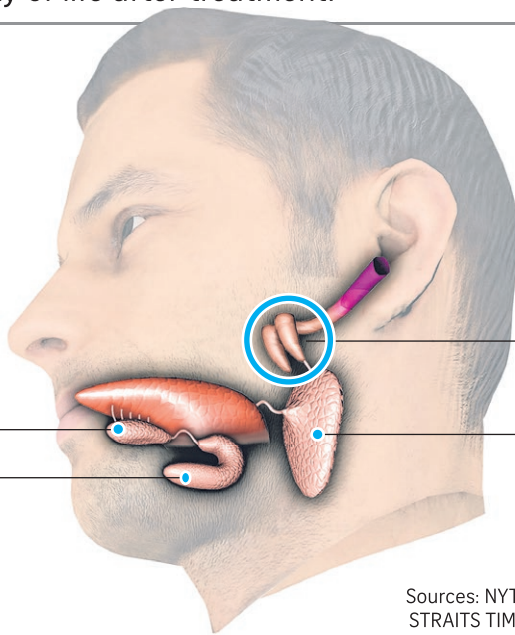
The **three major salivary glands** were documented a few centuries ago

### Sublingual

- Around 5 per cent of saliva comes from these glands

### Submandibular

- Produce 65 per cent to 70 per cent of saliva, including antimicrobial enzymes



### Tubarial

**New large salivary glands found in the nook where the nasal cavity meets the throat**

### Parotid

- Largest salivary glands
- Secrete saliva to lubricate the mouth
- The saliva contains amylase, an enzyme that starts the digestion of starch

Sources: NYTIMES, NETHERLANDS CANCER INSTITUTE  
STRAITS TIMES GRAPHICS: LEE HUP KHENG, LIM KAILI